

PART OF THE S.E. 1/4, SEC. 14, T.5N., R.2W., S.L.B. & M.

ROSEWOOD ESTATES

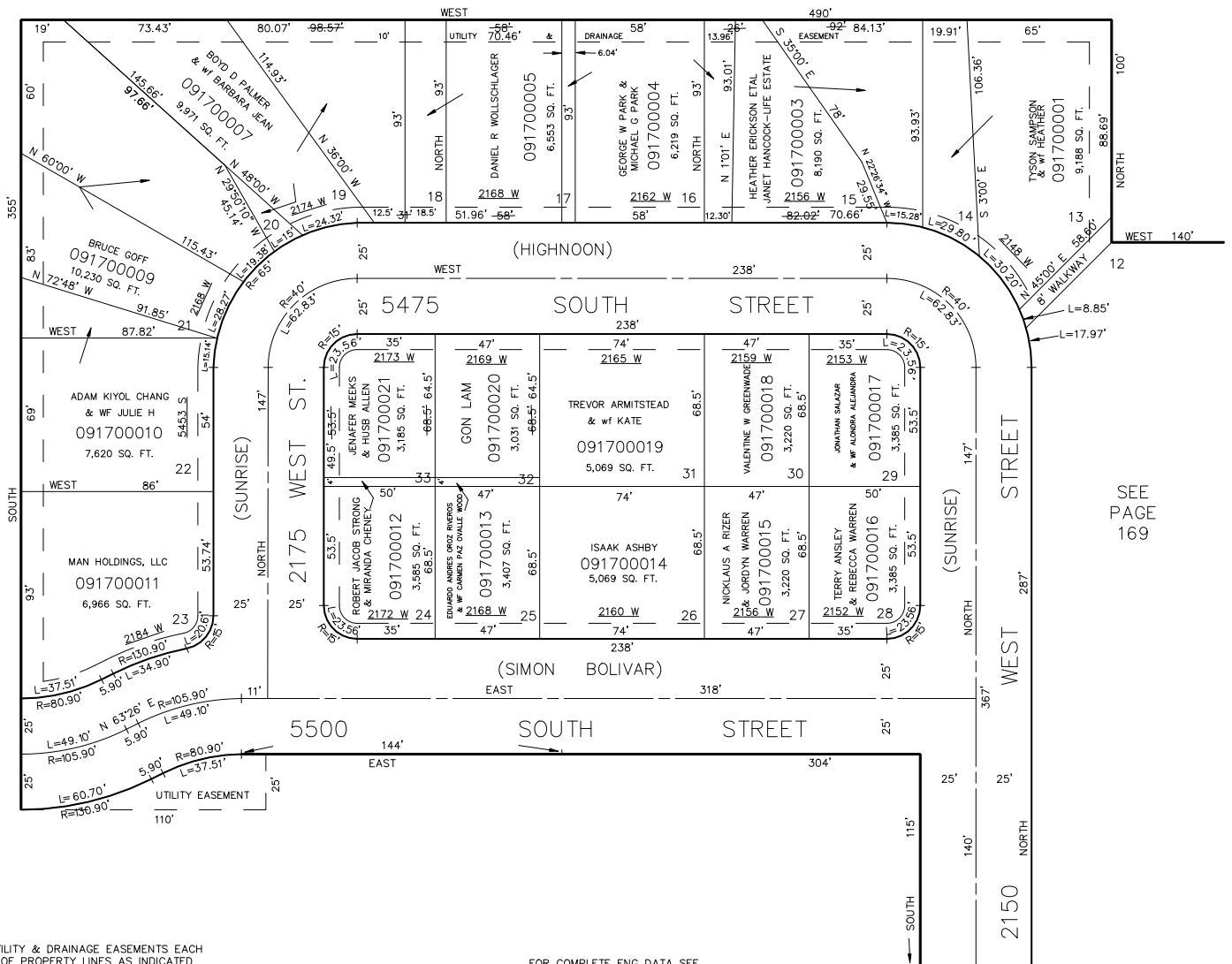
LOTS 13-33

IN ROY CITY

SCALE 1" = 40'

TAXING UNIT: 41

SEE PAGE 38



SEE PAGE 52

SEE PAGE 169

7' UTILITY & DRAINAGE EASEMENTS EACH SIDE OF PROPERTY LINES AS INDICATED BY DASHED LINES EXCEPT AS OTHERWISE SHOWN.

FOR COMPLETE ENG DATA SEE ORIGINAL DEDICATION PLAT IN BOOK 18, PAGE 75 OF RECORDS.

FOR TAX PURPOSES ONLY